

# Single-Use Product Portfolio

---

The indispensable bench tools for a successful scale-up



**DrM**

[www.drm.ch](http://www.drm.ch)

# single-use

## This is DrM

### **Customized solutions**

Each solid-liquid separation system is tailor made to the specific application parameters of our clients. We view every application as a challenge to satisfy our clients, regardless if the application is straight forward or complex.

### **Application comprehension**

Every solid-liquid separation application is unique. DrM's comprehension of all of the applications begins with a discussion with the client and is followed by a request that the client complete an application questionnaire to the best of its ability. Following a review of the information submitted by the client, DrM application specialists may suggest that on-site testing and/or piloting be carried out. This hands-on work ultimately gives both DrM and its clients the confidence that the process is scalable. It also puts DrM in a position to submit a technical/commercial proposal that it will stand behind.

### **Quality above all**

DrM's Quality System is ISO 9001 certified for the design and manufacture plants. We are dedicated to continually improving the efficiency and the effectiveness of our quality management system. All of our products follow a rigid quality control program that employs the most current testing and inspection methods prior to shipment.

# Single-Use systems

Laboratory Single-Use filtration and mixing systems are essential for the evaluation and development of industrial performances. During selection, sizing and validation, small-scale trials are performed to understand the equipment properties and determine process data for further scale-up and development.

Besides these standard Single-Use filters we also offer custom made systems applicable to specific client requirements.

## GENERAL INFORMATION SINGLE-USE FILTER

<b>Includes</b>	1 SU filter bag 1 Housing 2 pcs. tri clamp 2 pcs. tri clamp gasket
<b>Bag material</b>	Polyethylene, multi-layer bag film with gas barrier
<b>Material housing</b>	Polysulfone / 316L
<b>Connector type</b>	Hose barb, tri clamp, sterile/aseptic, luer, others on request
<b>Sterilisation</b>	Pre sterilized by gamma irradiation on request
<b>Heating jacket</b>	On request
<b>Note</b>	1) Other materials, sizes and capacities on request 2) Instrumentation and control unit on request 3) Gasket material: silicone (others on request) 4) Basic port configuration: 1/4" hose barb



## CONTIBAC® SU 0.5L

Filter area (m <sup>2</sup> )	0.006
Max cake thk. (mm)	6
Max cake volume per cycle (lt)	0.036
Design cake volume per filter bag (lt)	0.42
Filter bag volume (lt)	0.55
Batch size (lt)	≤ 5
FUNDABAC® SU (CONTIBAC® SU)	(≤ 5)



## CONTIBAC® SU 2L

890205.00

Filter area (m <sup>2</sup> )	0.048
Max cake thk. (mm)	6
Max cake volume per cycle (lt)	0.29
Design cake volume per filter bag (lt)	1.4
Filter bag volume (lt)	2
Batch size (lt)	≤ 40



## FUNDABAC® SU 2L

890202.00

Filter area (m <sup>2</sup> )	0.048
Max cake thk. (mm)	6
Max cake volume per cycle (lt)	0.29
Design cake volume per filter bag (lt)	1.4
Filter bag volume (lt)	2
Batch size (lt)	≤ 15



## CONTIBAC® SU 30L

890231.00

Filter area (m <sup>2</sup> )	0.87
Max cake thk. (mm)	8
Max cake volume per cycle (lt)	7.0
Design cake volume per filter bag (lt)	13.4
Filter bag volume (lt)	30
Batch size (lt)	≤ 2000



## FUNDABAC® SU 30L WITH CONTAINER

Filter area (m <sup>2</sup> )	0.87
Max cake thk. (mm)	8
Max cake volume per cycle (lt)	7.0
Design cake volume per filter bag (lt)	13.4
Filter bag volume (lt)	30
Batch size (lt)	≤ 150

### Note:

Turn a CONTIBAC® SU into a FUNDABAC® SU by adding this container at the bottom of the filter vessel

## GENERAL INFORMATION SINGLE-USE MIXER

<b>Includes</b>	1 SU filter bag 1 Housing 2 pcs. tri clamp 2 pcs. tri clamp gasket
<b>Bag material</b>	Polyethylene, multi-layer bag film with gas barrier
<b>Material housing</b>	Polysulfone / 316L
<b>Connector type</b>	Hose barb, tri clamp, sterile/aseptic, luer, others on request
<b>Sterilisation</b>	Pre sterilized by gamma irradiation on request
<b>Heating jacket</b>	On request
<b>Note</b>	1) Other materials, sizes and capacities on request 2) Instrumentation and control unit on request 3) Gasket material: silicone (others on request) 4) Basic port configuration: 1/4" hose barb



FUNDAMIX® SU 1L	
Drive unit	1
Plate dia. (mm)	65
Mixing volume (lt)	1



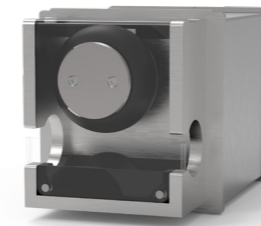
FUNDAMIX® SU 10L	
Drive unit	1
Plate dia. (mm)	65
Mixing volume (lt)	10



FUNDAMIX® SU 25L	
Drive unit	1
Plate dia. (mm)	65
Mixing volume (lt)	25



FUNDAMIX® SU 100L	
Drive unit	2
Plate dia. (mm)	145
Mixing volume (lt)	100



SU PINCH VALVE		896200.00
Type	Pinch, non-invasive	
Model	SU Valve	
Actuation	Electrical	
Actuation time	Opening: 3 sec Closing: 3 sec	
Power consumption	Idle position (closed or open): 0.1W During opening and closing (3 sec.): 5W	
Power supply	24 VDC / 12 VDC	
Signal input	OFF Position: 0VDC ON Position: 12...24VDC	
Material	Polyethylene / 316L	
Max. working pressure (barg)	4	
Max. working Temperature	80 °C	
Hose size	OD 6.35 - 25.4 mm OD 1/4" - 1"	
Electrical connection	Power, 12VDC: 2 wires Signal, 24VDC: 2 wires	
Note	1) User interface via PLC or DCS	



FUNDASTEP CONTROLLER		895100.00 / 895200.00
Size (mm)	1) 400 x 300 x 200 2) 600 x 300 x 200	
Stainless steel cabinet with TP includes	1 PLC 3 Power supplies 6 SU pinch valves 3 Solenoid valves (3/2-way) 2 Air filter regulator 1 Emergency Stop	
Options	Max. 3 Pressure sensors 1 Flow sensor	
Power supply	100...230 VAC (12/24 VDC)	
Power supply connector	IEC 60320 C13   IEC 320 C13	
Electrical connector	Circular connectors with protective cap	
Pneumatic connector	4 Push-in connector for tubing diam. 6 mm	
Touch panel operating modes:	1) Fully automatic loop filtration: The filtration cycle restarts automatically after reaching the end of the sequence 2) Automatic single pass filtration: The filtration cycle stops after reaching the end of the filtration 3) Step-by-step: The operator steps through the sequence manually 4) Manual: The operator opens and closes each individual valve from the touch screen	
Note	1) Steps can be added/removed by the operator as required	



BACK-FLUSH TANK 1L	
Includes	1 SU back-flush bag 1 Housing 1 Tri clamp 1 Tri clamp gasket
Bag volume (lt)	1
Note	Other specification based on FUNDABAC® Single-Use Filter



AIR COMPRESSOR		896700.00
Execution	Stand-alone	
Max. Flow (lt / min)	37	
Max. Pressure (barg)	8	
Tank Volume (lt)	3.5	
Power supply (V AC)	100-240	
Noise level (dB)	30-40	
Note	1) Lubricated 2) Pressure reducing valve and pressure gauges available 3) Quick pneumatic coupling connection 4) Other compressor types and oil-free on request	



PERISTALTIC PUMP	
Execution	Stand-alone, integrated user panel with display
Product contact parts	Santoprene / SEBS
Max. Flow (lt / min)	2
Max. Pressure (barg)	7
Max. Temperature (°C)	45
Power supply (V AC)	100-240
Note	1) Manual, analog and digital input and output functionality 2) Tri clamp or hose barb fittings available 3) Other peristaltic pump types, materials and compliance on request



ASSEMBLY SET PNEUMATIC	
Set includes	3 m pneum. tubing, OD 6 mm 5 pcs. manual valve, pneumatic 1 Check valve, OD 6 mm 1 Male branch "Y", OD 6 mm 1 Male connector, 1/4", OD 6 mm 2 pcs. male branch tee, 1/4", OD 6 mm 2 pcs. female connector, 1/4", OD 6 mm 2 pcs. silencer, 1/4"



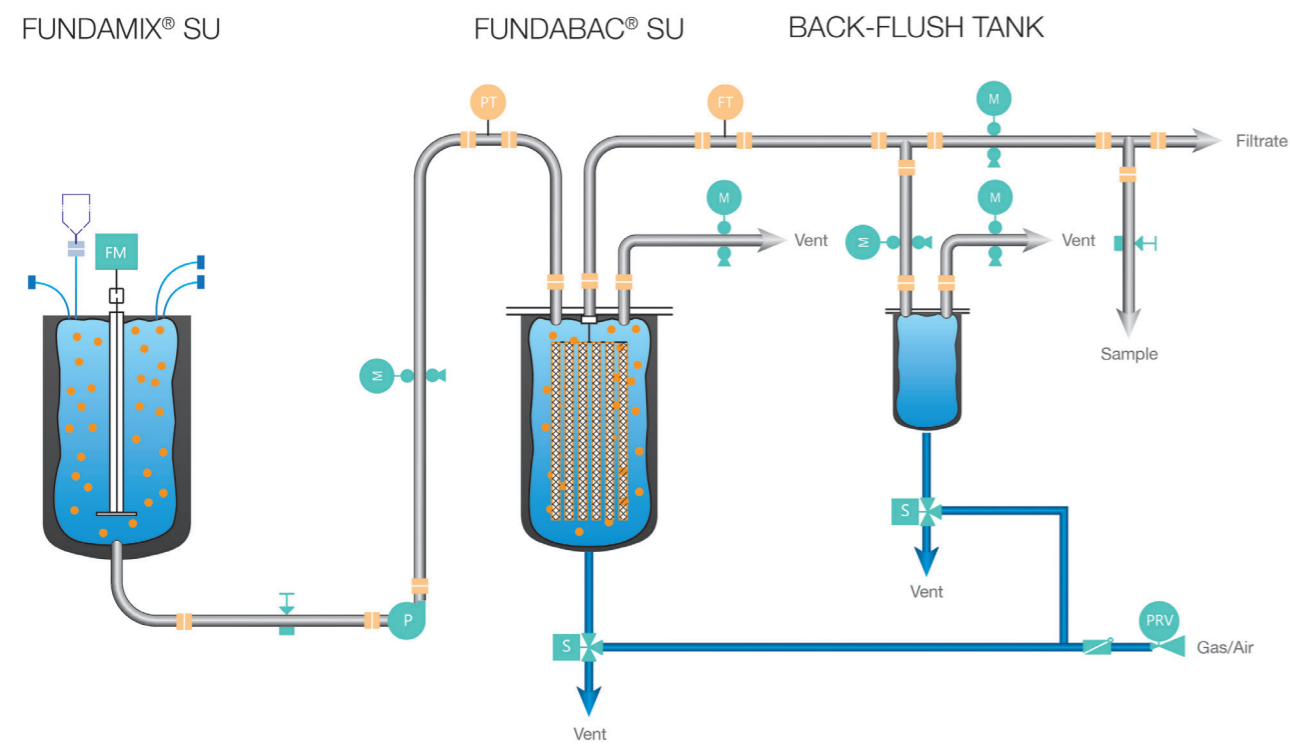
CENTRIFUGAL PUMP		896500.00
Execution	Stand-alone, integrated user panel with display	
Product contact parts	Polypropylene	
Max. Flow (lt / min)	17	
Max. Pressure (barg)	2	
Max. Temperature (°C)	60	
Power supply (V DC)	24	
Note	1) Manual and analog input 2) Tri clamp or hose barb fittings available 3) Wet material can be delivered pre sterilized by gamma irradiation 4) Wet material FDA, USP Class VI, BSE/TSE/animal free 5) Other centrifugal pump configuration and materials available on request	



ASSEMBLY SET PROCESS	
Set includes	3 m reinforced tubing, 1/4", OD 16 mm, silicone 10 pcs. Hose barb/tri clamp adapter, 1/4" HB/25 mm TC 10 pcs. tri clamp silicone gasket 5 pcs. clamp, quick-connect, TC 25 mm 2 pcs. hose barb Y-connector, 1/4" 5 pcs. manual valve, process, 1/8"- 3/4" OD tube

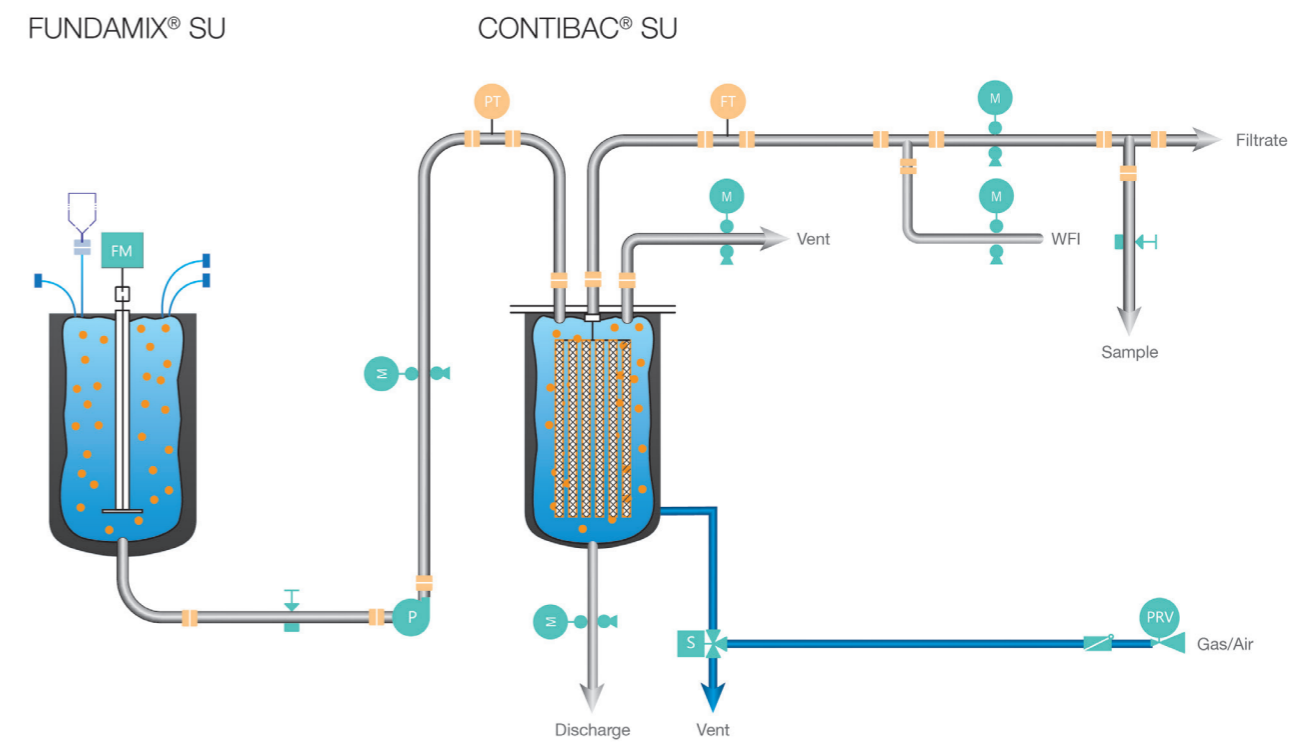
# FUNDABAC® SU

Typical process flow diagram of a FUNDABAC® SU filter and a FUNDAMIX® SU mixer.



# CONTIBAC® SU

Typical process flow diagram of a CONTIBAC® SU filter and a FUNDAMIX® SU mixer





# Headquarters and Subsidiaries

## Switzerland Global HQ

DrM, Dr. Mueller AG  
Alte Landstrasse 415  
8708 Maennedorf, Switzerland

Tel. +41 44 921 2121  
Fax +41 44 921 2131

mailbox@drm.ch  
[www.drm.ch](http://www.drm.ch)

## China

DrM Shanghai Co., Ltd.  
Building 2  
No. 18 Rong Xin Road  
Xinqiao, Song Jiang District  
Shanghai 201612, China

Tel. +86 21 5768 7390  
Fax +86 21 5768 7391

## Poland

DrM Polska Sp. z o.o.  
Al. Kazimierza Wielkiego 5  
PL87-800  
Wloclawek, Poland

Tel. +48 54 237 2921  
Fax +48 54 237 2931

## India

DrM Filter Technology Pvt. Ltd.  
Plot 46 – 1 & 2  
Hansot Road Village  
Pungam, Ankleshwar  
Bharuch, Gujarat,  
393020, India

Tel. +91 2646 652775/6

## USA

DrM, Inc.  
2125 Center Ave.  
Suite 507  
Fort Lee NJ 07024, USA

Tel. +1 201 302 0667  
Fax +1 201 302 6062

## Malaysia

DrM, Dr. Mueller AG  
SEA Regional Office  
No. 13 Jalan SE 2B  
Sunway Eastwood  
Taman Equine  
Seri Kembangan  
43300 Selangor, Malaysia

Tel. +60 3 8940 4917  
Mob. +60 17 394 056

## UAE

DrM, Dr. Mueller LTD  
Swiss Tower, 20th Floor  
P.O. Box 392394  
Dubai / United Arab Emirates

Tel. +971 505710838  
Tel. +971 505710839

## Germany

Klaus-Günther Brekow  
Waldnielerstr. 16  
47839 Krefeld  
Germany

Tel: +49 2151 659 19 46  
Fax: +49 2151 659 19 36  
Mob: +49 1752 99 8393  
Email: kbrekow@drm.ch