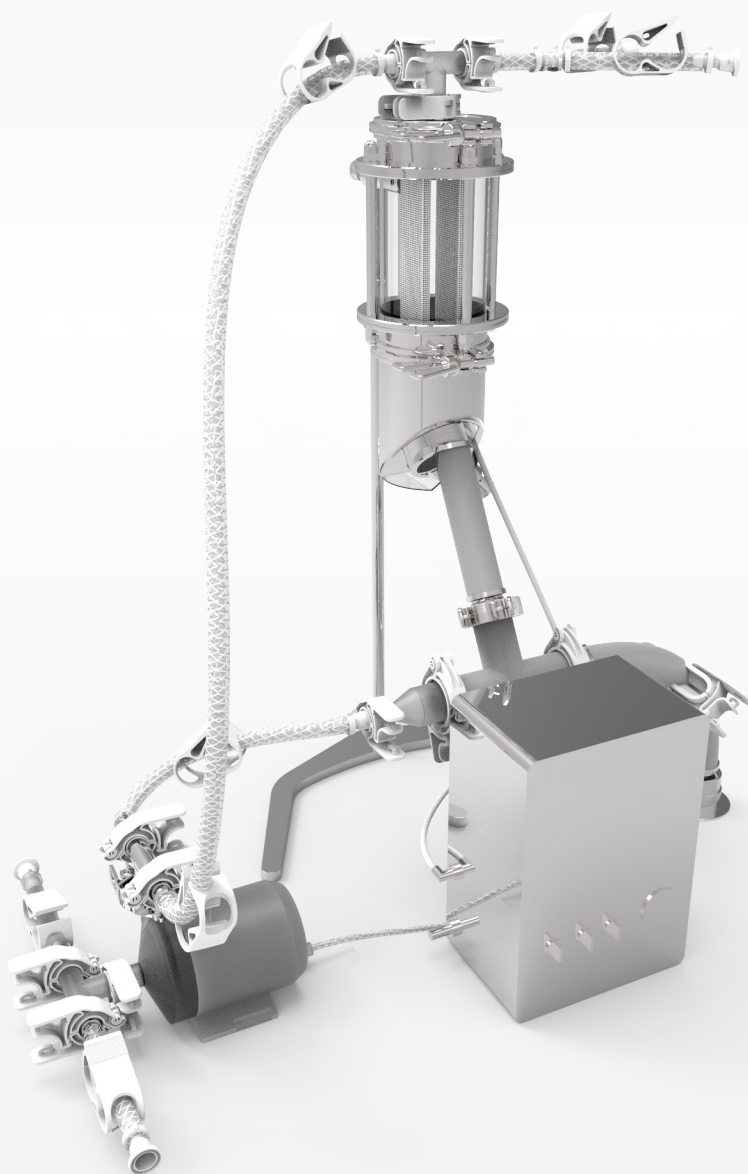


LABORATORY SINGLE-USE SYSTEMS

The indispensable bench tools for a successful scale-up



DrM

www.drmgroupp.com

single-user Lab systems



This is DrM

Customized solutions

Each solid-liquid separation system is tailor made to the specific application parameters of our clients. We view every application as a challenge to satisfy our clients, regardless if the application is straight forward or complex.

Application comprehension

Every solid-liquid separation application is unique. DrM's comprehension of all of the applications begins with a discussion with the client and is followed by a request that the client complete an application questionnaire to the best of its ability. Following a review of the information submitted by the client, DrM application specialists may suggest that on-site testing and/or piloting be carried out. This hands-on work ultimately gives both DrM and its clients the confidence that the process is scalable. It also puts DrM in a position to submit a technical/commercial proposal that it will stand behind.

Quality above all

DrM's Quality System is ISO 9001 certified for the design and manufacture plants. We are dedicated to continually improving the efficiency and the effectiveness of our quality management system. All of our products follow a rigid quality control program that employs the most current testing and inspection methods prior to shipment.

NUTSCHE STAINLESS STEEL

850226.35



For initial evaluation of the suspension and preliminary selection of the most suitable filter cloth, Nutsche type pressure filters are available.

Material	SS 316L
Filter Area (m ²)	0.001
Filling Volume (lt)	0.2
Weight (kg)	6
Max. Pressure (barg)	30
Max. Temperature (°C)	200
Heating jacket	Yes
Accessories	Ball valve, pressure gauge, gas pressure reducer

BACK-FLUSH TANK 1-5L

891125.00



Includes	1 SU Back-flush bag 1 Housing 1 Tri clamp 1 Tri clamp gasket
Bag volume (lt)	1-5
Note	Other specification based on FUNDABAC® Single-Use Filter



FUNDAMIX® SU 10L

890510.00

Drive unit	1
Plate dia. (mm)	65
Mixing volume (lt)	10

AIR COMPRESSOR

896700.00



Execution	Stand-alone
Max. Flow (lt / min)	37
Max. Pressure (barg)	8
Tank Volume (lt)	3.5
Power Supply (V AC)	100-240
Noise Level (dB)	30-40
Note	Lubricated. Pressure reducing valve and pressure gauges available. Quick pneumatic coupling connection. Other compressor types and oil-free on request



FUNDALOOP® CONTROL BOX		895301.00
Material	PE, PP	
Power Supply (V AC)	230 V, 50 Hz	
Compressed Air Connection	6 or 8 mm	
Max. Pressure (barg)	2	



FUNDALOOP® MANIFOLD		894621.00
Material	PE, PP	



FUNDALOOP® FILTER BAG		891135.00
Filter Area (m ²)	0.006	
Filling Volume (lt)	0.5	
Material	PE, PP	



FUNDALOOP® BACKFLUSH BAG 1-5 L		891120.00
Filling Volume (lt)	1-5	
Material	PE, PP	

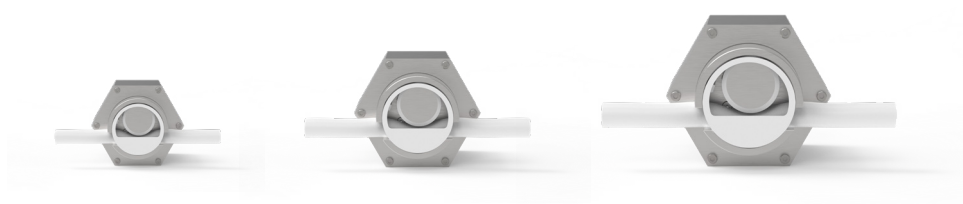


FUNDALOOP® DISCHARGE BAG		894624.91
Filling Volume (lt)	20	
Material	PE	



CENTRIFUGAL PUMP		896500.00
Execution	Stand-alone, integrated user panel with display	
Product Contact Parts	Polypropylene	
Max. Flow (lt / min)	17	
Max. Pressure (barg)	2	
Max. Temperature (°C)	60	
Power Supply (V DC)	24	
Note	Manual and analog input. Tri clamp or hose barb fittings available. Wet material can be delivered pre sterilized by gamma irradiation. Wet material FDA, USP Class VI, BSE/TSE/animal free. Other centrifugal pump configuration and materials available on request	

SU VALVE	Micro	Mini	Uni
----------	-------	------	-----



Type	Pinch, non-invasive	Pinch, non-invasive	Pinch, non-invasive
Actuation	Remote from PLC, local with switch and via App (iPhone)		
Actuation Time (open and close)	3 sec	3 sec	3 sec
Weight	0.2 kg	1.1 kg	2.6 kg
Dimensions (L x Ø)	97mm x 50mm	140mm x 73mm	195mm x 120mm
Max. op. Pressure (barg)	5 - 20 (*1)	5 - 20 (*1)	5 - 20 (*1)
Max. op. Temperature	60 °C	60 °C	60 °C
Hose size	OD 3 - 9 mm OD 1/8" - 3/8"	OD *9 - 20 mm OD 3/8" - 3/4"	OD *20 - 35 mm OD 3/4" - 1 3/8"
Material	316L / HDPE / POM	316L / HDPE / PA	316L / HDPE / PA
Protection Rating	IP65	IP65	IP65
Power consumption	Idle position: 0.1W In operation (3s): 5W	Idle position: 0.1W In operation (3s): 10W	Idle position: 0.1W In operation (3s): 20W
Power Supply	12 - 24 Vdc (*2)	24 Vdc	24 Vdc
Material	316L / HDPE / POM	316L / HDPE / PA	316L / HDPE / PA
Max. op. Pressure (barg)	5 - 20 (*1)	5 - 20 (*1)	5 - 20 (*1)
Max. op. Temperature	60 °C	60 °C	60 °C
Protection rating	IP65	IP65	IP65
Signal Input (Analog Mode)	4...20mA (24Vdc)	4...20mA (24Vdc)	4...20mA (24Vdc)
Signal Input (ON/OFF Mode)	NC: ON (24Vdc) / OFF (0Vdc) NO: ON (0Vdc) / OFF (24Vdc)		
Non Conformity Alarm	Normal: 0Vdc / Non Conformity: 24Vdc		
Electrical connections	Power 24Vdc, Ground, Signal Input 24Vdc, Non Conformity Output 24Vdc		
Chemical resistance	Suited for IPA Cleaning (Cleanroom airlocks)		

Notes

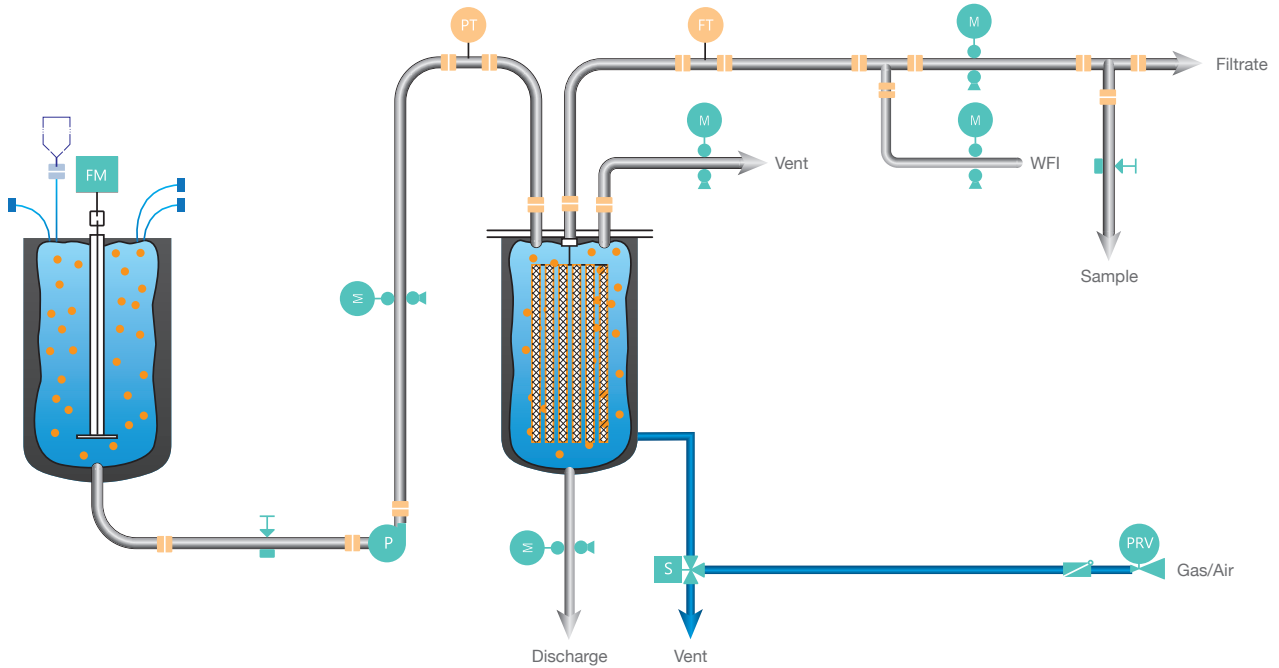
- *1: Max. operating pressure depends on tube size.
- *2: Nominal voltage 12V. Valve can operate at 24V by adjusting power settings in the App.
- *3 Operation also possible for smaller hose sizes starting at 3 mm. Opening and closing times depend on power setting and tube diameter.

Single-Use Flowsheets

Process flow diagram of a FUNDALOOP® Filter and a FUNDAMIX® SU Mixer.

FUNDAMIX® SU

FUNDALOOP®

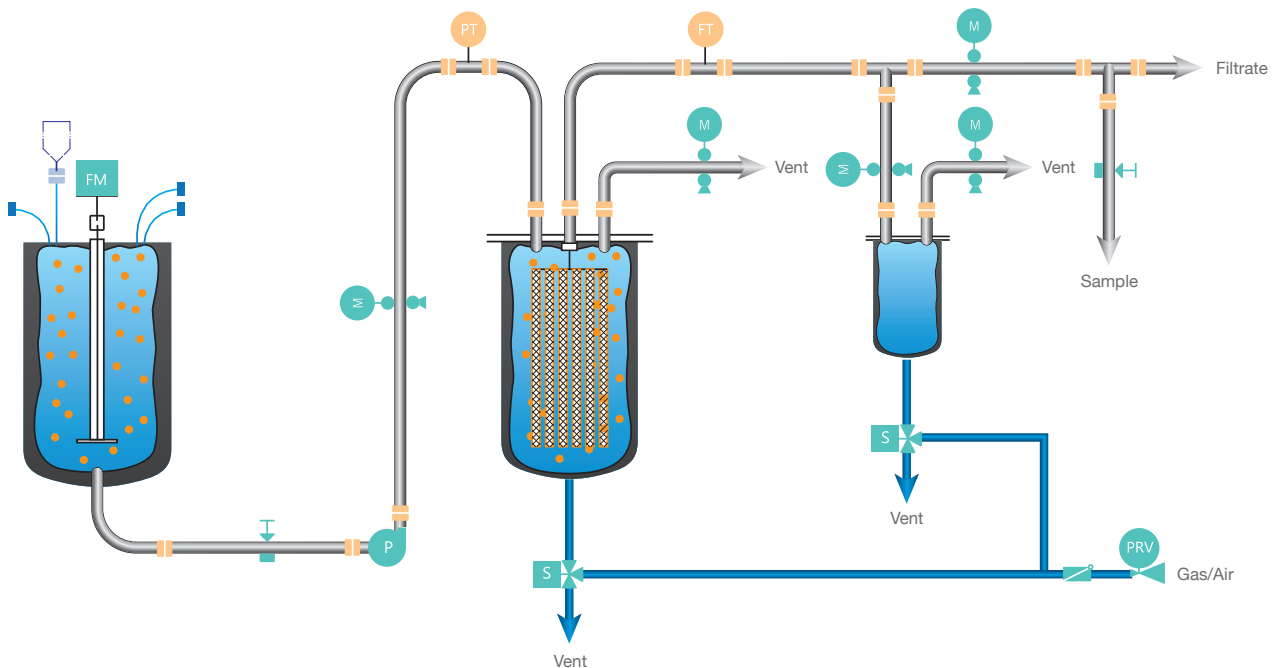


Process flow diagram of a FUNDALOOP® Filter with a back-flush tank and a FUNDAMIX® SU Mixer.

FUNDAMIX® SU

FUNDALOOP®

BACK-FLUSH TANK





Headquarters and Subsidiaries

Switzerland (HQ)

DrM, Dr. Mueller AG
Alte Landstrasse 415
8708 Maennedorf, Switzerland

Tel. +41 44 921 2121
Fax +41 44 921 2131

mailbox@drm.ch
www.drmgroup.com

China

DrM Shanghai Co., Ltd.
Building 2
No. 18 Rong Xin Road
Xinqiao, Song Jiang District
Shanghai 201612, China

Tel. +86 21 5768 7390
Fax +86 21 5768 7391

Poland

DrM Polska Sp. z o.o.
Al. Kazimierza Wielkiego 5
PL87-800
Wloclawek, Poland

Tel. +48 54 237 2921
Fax +48 54 237 2931

India

DrM Filter Technology Pvt. Ltd.
Plot 46 – 1 & 2
Hansot Road Village
Pungam, Ankleshwar
Bharuch, Gujarat,
393020, India

Tel. +91 2646 652775/6

USA

DrM, Inc.
2125 Center Ave.
Suite 507
Fort Lee NJ 07024, USA

Tel. +1 201 302 0667
Fax +1 201 302 6062

Malaysia

DrM, Dr. Mueller AG
SEA Regional Office
No. 13 Jalan SE 2B
Sunway Eastwood
Taman Equine
Seri Kembangan
43300 Selangor, Malaysia

Tel. +60 3 8940 4917
Mob. +60 17 394 056