

Single-Use Product Portfolio

The indispensable bench tools for a successful scale-up



DrM
www.drmgroupp.com

single-use



This is DrM

Customized solutions

Each solid-liquid separation system is tailor made to the specific application parameters of our clients. We view every application as a challenge to satisfy our clients, regardless if the application is straight forward or complex.

Application comprehension

Every solid-liquid separation application is unique. DrM's comprehension of all of the applications begins with a discussion with the client and is followed by a request that the client complete an application questionnaire to the best of its ability. Following a review of the information submitted by the client, DrM application specialists may suggest that on-site testing and/or piloting be carried out. This hands-on work ultimately gives both DrM and its clients the confidence that the process is scalable. It also puts DrM in a position to submit a technical/commercial proposal that it will stand behind.

Quality above all

DrM's Quality System is ISO 9001 certified for the design and manufacture plants. We are dedicated to continually improving the efficiency and the effectiveness of our quality management system. All of our products follow a rigid quality control program that employs the most current testing and inspection methods prior to shipment.

Single-Use systems

Laboratory Single-Use filtration and mixing systems are essential for the evaluation and development of industrial performances. During selection, sizing and validation, small-scale trials are performed to understand the equipment properties and determine process data for further scale-up and development. Besides these standard Single-Use filters we also offer custom made systems applicable to specific client requirements.

GENERAL INFORMATION FUNDALOO® SINGLE-USE FILTER	
Includes	1 Single-Use filter bag 1 Housing 2 pcs. tri clamp 2 pcs. tri clamp gasket
Bag material	Polyethylene, multi-layer bag film with gas barrier
Material housing	Polysulfone / 316L
Connector type	Hose barb, tri clamp, sterile/aseptic, luer, others on request
Sterilisation	Pre sterilized by gamma irradiation on request
Heating jacket	On request
Note	1) Other materials, sizes and capacities on request 2) Instrumentation and control unit on request 3) Gasket material: silicone (others on request) 4) Basic port configuration: 1/4" hose barb



FUNDALOO® 50	
Filter area (m²)	0.006
Max cake thk. (mm)	6
Max cake volume per cycle (lt)	0.036
Design cake volume per filter bag (lt)	0.42
Filter bag volume (lt)	0.55
Batch size (lt)	≤ 5



FUNDALOO® 200 WITH DISCHARGE		890205.00
Filter area (m²)	0.048	
Max cake thk. (mm)	6	
Max cake volume per cycle (lt)	0.29	
Design cake volume per filter bag (lt)	1.4	
Filter bag volume (lt)	2	
Batch size (lt)	≤ 40	



FUNDALOOP® 200		890202.00
Filter area (m ²)		0.048
Max cake thk. (mm)		6
Max cake volume per cycle (lt)		0.29
Design cake volume per filter bag (lt)		1.4
Filter bag volume (lt)		2
Batch size (lt)		≤ 15



FUNDALOOP® 3000		890231.00
Filter area (m ²)		0.87
Max cake thk. (mm)		8
Max cake volume per cycle (lt)		7.0
Design cake volume per filter bag (lt)		13.4
Filter bag volume (lt)		30
Batch size (lt)		≤ 2000



FUNDALOOP® 3000 WITH CONTAINER		
Filter area (m ²)		0.87
Max cake thk. (mm)		8
Max cake volume per cycle (lt)		7.0
Design cake volume per filter bag (lt)		13.4
Filter bag volume (lt)		30
Batch size (lt)		≤ 150
Note:	Change the operation mode by adding this container at the bottom of the filter vessel	

GENERAL INFORMATION FUNDAMIX® SU SINGLE-USE MIXER

Includes	1 Single-Use filter bag 1 Housing 2 pcs. tri clamp 2 pcs. tri clamp gasket
Bag material	Polyethylene, multi-layer bag film with gas barrier
Material housing	Polysulfone / 316L
Connector type	Hose barb, tri clamp, sterile/aseptic, luer, others on request
Sterilisation	Pre sterilized by gamma irradiation on request
Heating jacket	On request
Note	1) Other materials, sizes and capacities on request 2) Instrumentation and control unit on request 3) Gasket material: silicone (others on request) 4) Basic port configuration: 1/4" hose barb



FUNDAMIX® SU 1L

Drive unit	1
Plate dia. (mm)	65
Mixing volume (lt)	1



FUNDAMIX® SU 10L

Drive unit	1
Plate dia. (mm)	65
Mixing volume (lt)	10



FUNDAMIX® SU 25L

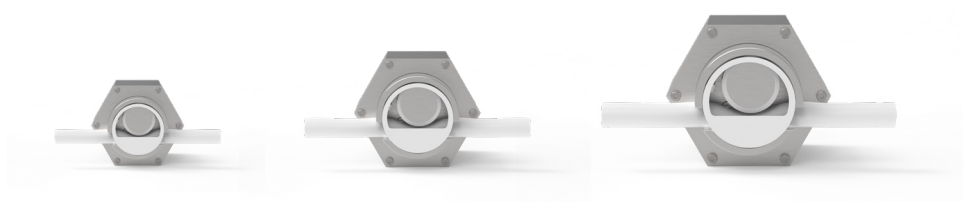
Drive unit	1
Plate dia. (mm)	65
Mixing volume (lt)	25



FUNDAMIX® SU 100L

Drive unit	2
Plate dia. (mm)	145
Mixing volume (lt)	100

SU VALVE	Micro	Mini	Uni
----------	-------	------	-----



Type	Pinch, non-invasive	Pinch, non-invasive	Pinch, non-invasive
Actuation	Remote from PLC, local with switch and via App (iPhone)		
Actuation Time (open and close)	3 sec	3 sec	3 sec
Weight	0.2 kg	1.1 kg	2.6 kg
Dimensions (L x Ø)	97mm x 50mm	140mm x 73mm	195mm x 120mm
Max. op. Pressure (barg)	5 - 20 (*1)	5 - 20 (*1)	5 - 20 (*1)
Max. op. Temperature	60 °C	60 °C	60 °C
Hose size	OD 3 - 9 mm OD 1/8" - 3/8"	OD 9 - 20 mm OD 3/8" - 3/4"	OD 20 - 35 mm OD 3/4" - 1 3/8"
Material	316L / HDPE / POM	316L / HDPE / PA	316L / HDPE / PA
Protection Rating	IP65	IP65	IP65
Power consumption	Idle position: 0.1W In operation (3s): 5W	Idle position: 0.1W In operation (3s): 10W	Idle position: 0.1W In operation (3s): 20W
Power Supply	12 - 24 Vdc (*2)	24 Vdc	24 Vdc
Material	316L / HDPE / POM	316L / HDPE / PA	316L / HDPE / PA
Max. op. Pressure (barg)	5 - 20 (*1)	5 - 20 (*1)	5 - 20 (*1)
Max. op. Temperature	60 °C	60 °C	60 °C
Protection rating	IP65	IP65	IP65
Signal Input (Analog Mode)	4...20mA (24Vdc)	4...20mA (24Vdc)	4...20mA (24Vdc)
Signal Input (ON/OFF Mode)	NC: ON (24Vdc) / OFF (0Vdc) NO: ON (0Vdc) / OFF (24Vdc)		
Non Conformity Alarm	Normal: 0Vdc / Non Conformity: 24Vdc		
Electrical connections	Power 24Vdc, Ground, Signal Input 24Vdc, Non Conformity Output 24Vdc		
Chemical resistance	Suited for IPA Cleaning (Cleanroom airlocks)		
Notes	*1: Max. operating pressure depends on tube size. *2: Nominal voltage 12V. Valve can operate at 24V by adjusting power settings in the App. Opening and closing times depend on power setting and tube diameter.		



BACK-FLUSH TANK 1-5L

Includes	1 SU back-flush bag 1 Housing 1 Tri clamp 1 Tri clamp gasket
Bag volume (lt)	1-5
Note	Other specification based on FUNDALOOP®

PERISTALTIC PUMP

Execution	Stand-alone, integrated user panel with display
Product contact parts	Santoprene / SEBS
Max. Flow (lt / min)	2
Max. Pressure (barg)	7
Max. Temperature (°C)	45
Power supply (V AC)	100-240
Note	1) Manual, analog and digital input and output functionality 2) Tri clamp or hose barb fittings available 3) Other peristaltic pump types, materials and compliance on request

CENTRIFUGAL PUMP

896500.00

Execution	Stand-alone, integrated user panel with display
Product contact parts	Polypropylene
Max. Flow (lt / min)	17
Max. Pressure (barg)	2
Max. Temperature (°C)	60
Power supply (V DC)	24
Note	1) Manual and analog input 2) Tri clamp or hose barb fittings available 3) Wet material can be delivered pre sterilized by gamma irradiation 4) Wet material FDA, USP Class VI, BSE/TSE/animal free 5) Other centrifugal pump configuration and materials available on request





AIR COMPRESSOR

896700.00

Execution	Stand-alone
Max. Flow (lt / min)	37
Max. Pressure (barg)	8
Tank Volume (lt)	3.5
Power supply (V AC)	100-240
Noise level (dB)	30-40
Note	1) Lubricated 2) Pressure reducing valve and pressure gauges available 3) Quick pneumatic coupling connection 4) Other compressor types and oil-free on request



ASSEMBLY SET PNEUMATIC

Set includes	3 m pneum. tubing, OD 6 mm 5 pcs. manual valve, pneumatic 1 Check valve, OD 6 mm 1 Male branch "Y", OD 6 mm 1 Male connector, 1/4", OD 6 mm 2 pcs. male branch tee, 1/4", OD 6 mm 2 pcs. female connector, 1/4", OD 6 mm 2 pcs. silencer, 1/4"
--------------	---

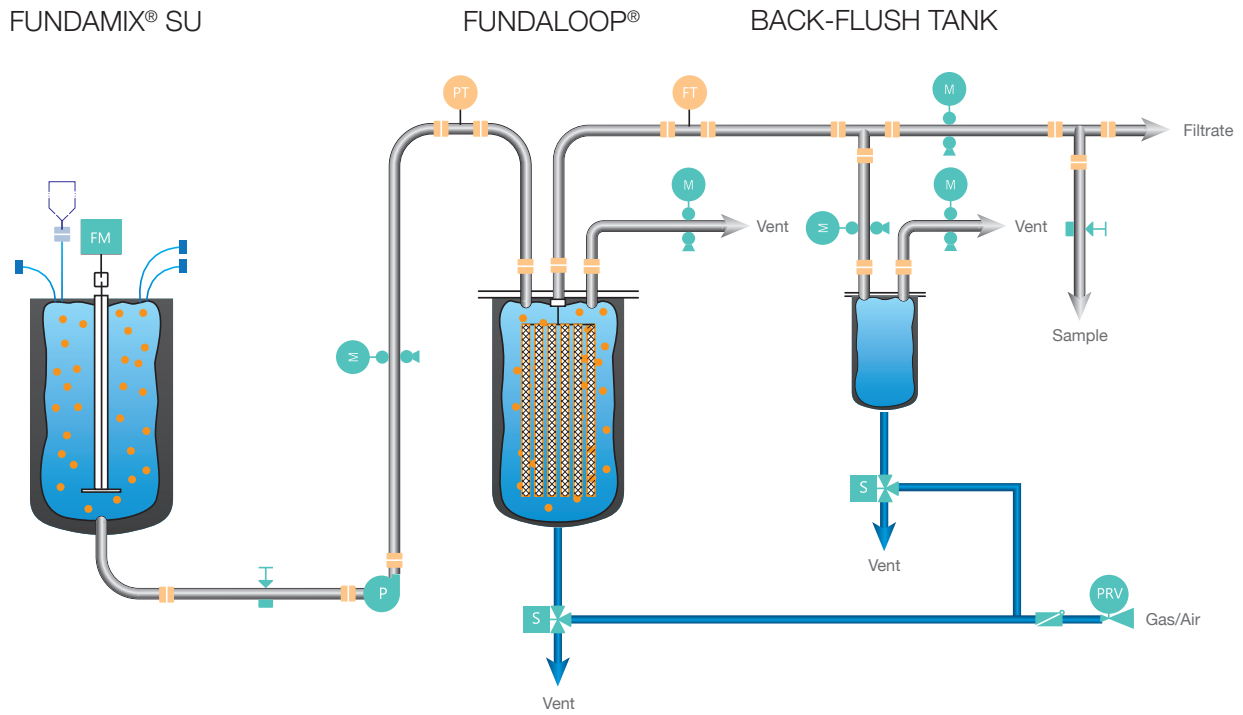


ASSEMBLY SET PROCESS

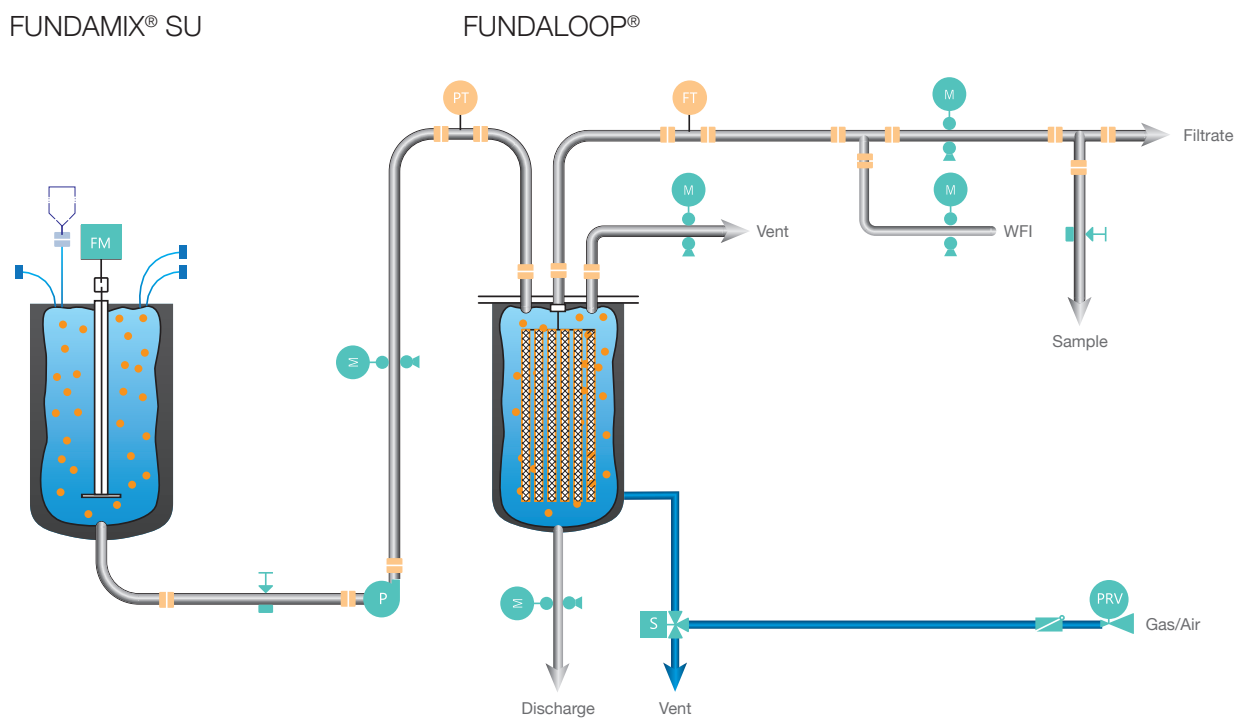
Set includes	3 m reinforced tubing, 1/4", OD 16 mm, silicone 10 pcs. Hose barb/tri clamp adapter, 1/4" HB/25 mm TC 10 pcs. tri clamp silicone gasket 5 pcs. clamp, quick-connect, TC 25 mm 2 pcs. hose barb Y-connector, 1/4" 5 pcs. manual valve, process, 1/8"- 3/4" OD tube
--------------	--

FUNDALOOP®

Typical process flow diagram of a FUNDALOOP® filter for multicycle filtration and a FUNDAMIX® SU mixer.



Typical process flow diagram of a FUNDALOOP® filter for high capacity filtration and a FUNDAMIX® SU mixer.



FILTRATION AND MIXING SOLUTIONS



Headquarters and Subsidiaries

Switzerland (HQ)

DrM, Dr. Mueller AG
Alte Landstrasse 415
8708 Maennedorf, Switzerland

Tel. +41 44 921 2121
Fax +41 44 921 2131

mailbox@drm.ch
www.drmgroup.com

China

DrM Shanghai Co., Ltd.
Building 2
No. 18 Rong Xin Road
Xinqiao, Song Jiang District
Shanghai 201612, China

Tel. +86 21 5768 7390
Fax +86 21 5768 7391

Poland

DrM Polska Sp. z o.o.
Al. Kazimierza Wielkiego 5
PL87-800
Wloclawek, Poland

Tel. +48 54 237 2921
Fax +48 54 237 2931

India

DrM Filter Technology Pvt. Ltd.
Plot 46 – 1 & 2
Hansot Road Village
Pungam, Ankleshwar
Bharuch, Gujarat,
393020, India

Tel. +91 2646 652775/6

USA

DrM, Inc.
2125 Center Ave.
Suite 507
Fort Lee NJ 07024, USA

Tel. +1 201 302 0667
Fax +1 201 302 6062

Malaysia

DrM, Dr. Mueller AG
SEA Regional Office
No. 13 Jalan SE 2B
Sunway Eastwood
Taman Equine
Seri Kembangan
43300 Selangor, Malaysia

Tel. +60 3 8940 4917
Mob. +60 17 394 056