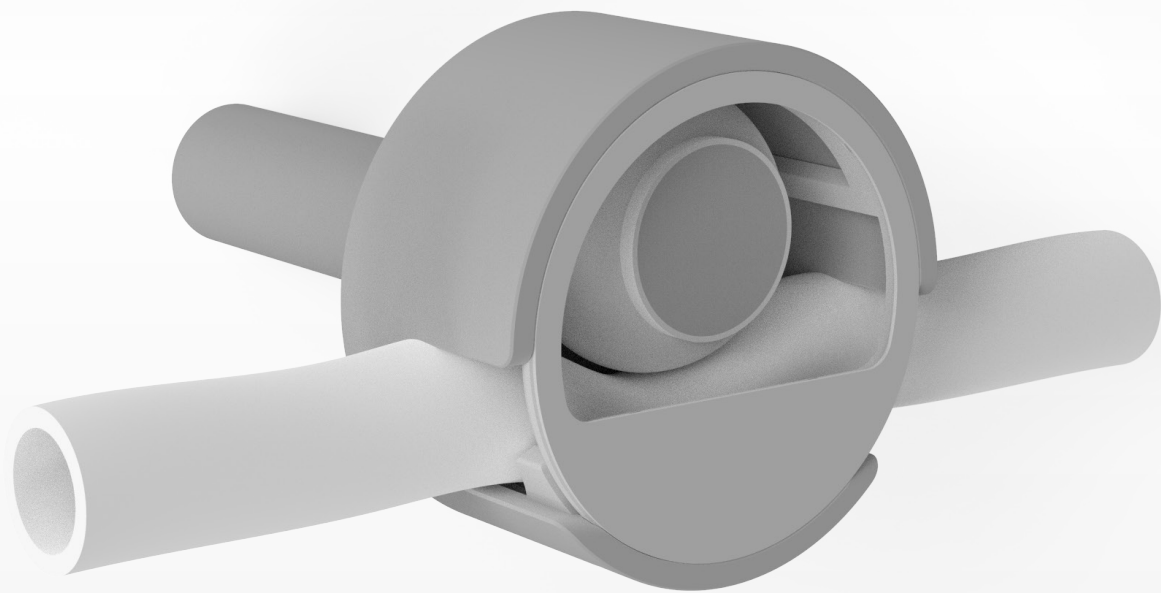


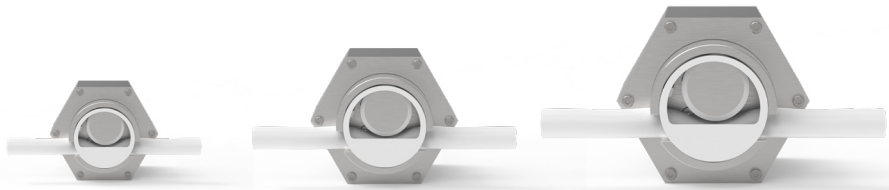
Single-Use Pinch Valve

Precise on/off flow control for single-use applications



Our pinch valves are perfectly suited for single-use applications where on/off flow control is required. As the valve does not get in contact with the process media it does not require replacement of any parts. For non-pressure designs, simple solenoid-driven pinch valves can be used. However, when pressure needs to be applied such as in filtration equipment, standard solenoids cannot handle the significantly tougher tubings or the internal pressure.

Available models



	Micro	Mini	Uni
Type	Pinch, non-invasive	Pinch, non-invasive	Pinch, non-invasive
Actuation	Remote from PLC, local with switch and via App (iPhone)		
Actuation Time (open and close)	3 sec	3 sec	3 sec
Weight	0.2 kg	1.1 kg	2.6 kg
Dimensions (L x Ø)	97mm x 50mm	140mm x 73mm	195mm x 120mm
Max. op. Pressure (barg)	5 - 20 (*1)	5 - 20 (*1)	5 - 20 (*1)
Max. op. Temperature	60 °C	60 °C	60 °C
Hose size (max. op. value)	Up to 8.75 mm Up to 5/16"	Up to 20mm Up to 3/4"	Up to 35mm Up to 1 3/8"
Hose size (suggested range)	3mm - 9mm 1/8" - 3/8"	9mm - 20mm 3/8" - 3/4"	20mm - 35mm 3/4" - 1 3/8"
Material	316L / HDPE / POM	316L / HDPE / PA	316L / HDPE / PA
Protection Rating	IP65	IP65	IP65
Power consumption	Idle position: 0.1W In operation (3s): 5W	Idle position: 0.1W In operation (3s): 10W	Idle position: 0.1W In operation (3s): 20W
Power Supply	12 - 24 Vdc (*2)	24 Vdc	24 Vdc
Material	316L / HDPE / POM	316L / HDPE / PA	316L / HDPE / PA
Max. op. Pressure (barg)	5 - 20 (*1)	5 - 20 (*1)	5 - 20 (*1)
Max. op. Temperature	60 °C	60 °C	60 °C
Protection rating	IP65	IP65	IP65
Signal Input (Analog Mode)	4...20mA (24Vdc)	4...20mA (24Vdc)	4...20mA (24Vdc)
Signal Input (ON/OFF Mode)	NC: ON (24Vdc) / OFF (0Vdc) NO: ON (0Vdc) / OFF (24Vdc)		
Non Conformity Alarm	Normal: 0Vdc / Non Conformity: 24Vdc		
Electrical connections	Power 24Vdc, Ground, Signal Input 24Vdc, Non Conformity Output 24Vdc		
Chemical resistance	Suited for IPA Cleaning (Cleanroom airlocks)		
Notes	*1: Max. operating pressure depends on tube size. *2: Nominal voltage 12V. Valve can operate at 24V by adjusting power settings in the App. *3: Operation also possible for smaller hose sizes starting at 3 mm. Opening and closing times depend on power setting and tube diameter.		

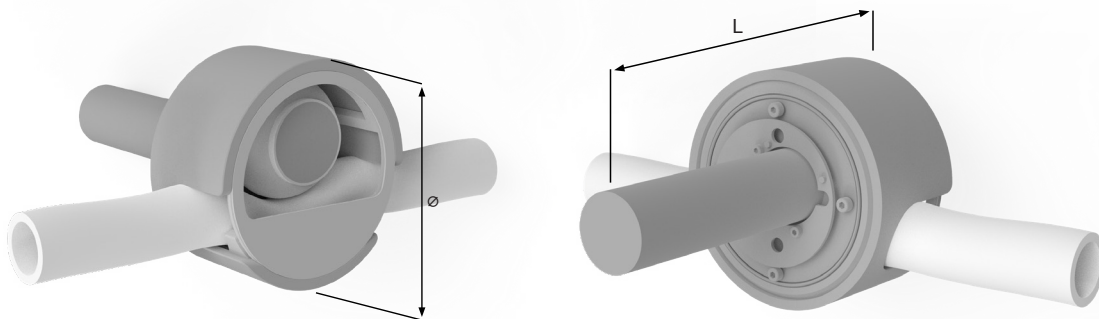
Easy setup and control



Seamlessly control and monitor operations through an easy-to-use app, ensuring fast and convenient management. The iPhone App is freely available on the AppStore. Once installed it can connect to the valve via Bluetooth and allows for the configuration of many parameters to adjust the valve precisely to the required operating conditions. The main setup parameters are: Bluetooth advertising time adjustment for security purposes, ON/OFF vs. analog operation, motor power setting, stop force set point adjustment, normally closed / open settings and various calibration functions. The valve can be fully controlled from the App for testing purposes.

The SU valves also come equipped with safety features to prevent unauthorized access, providing peace of mind and safeguarding your processes. Trust in our advanced SU pinch valve technology for unparalleled performance and convenience.

With effortless installation, you can quickly integrate our valves into your skid setup without any hassle. The valve can be adapted precisely to the required flexible tube size.



Alternative viewing angles of the single-use valve. Please see table for dimensions of SUV Micro, SUV Mini and SUV Uni.



FUNDALOOP® 3000 single-use filter skid employing multiple SU valves for full flow control.

A newly developed design allows for on/off control of pressurized single-use tubings in a compact package. The tubing firmly sits in a well-defined, hose size adaptable bed which guarantees uninterrupted operation for many cycles. The valve can easily be installed within a cabinet with only the actuated part being visible.

The valves are perfectly suited to be panel mounted into a control panel. This OEM version is delivered without an enclosure. If required, the valve can also be delivered as a stand alone version with a plastic enclosure. The entire valve component can be easily installed in any direction desired without losing any pinching ability.



Headquarters and Subsidiaries

Switzerland (HQ)

DrM, Dr. Mueller AG
Alte Landstrasse 415
8708 Maennedorf, Switzerland
Tel. +41 44 921 2121
Fax +41 44 921 2131
mailbox@drmgroupp.com
www.drmgroupp.com

China

DrM Shanghai Co., Ltd.
Building 2
No. 18 Rong Xin Road
Xinqiao, Song Jiang District
Shanghai 201612, China
Tel. +86 21 5768 7390
Fax +86 21 5768 7391

Poland

DrM Polska Sp. z o.o.
Al. Kazimierza Wielkiego 5
PL87-800
Wloclawek, Poland
Tel. +48 54 237 2921
Fax +48 54 237 2931

India

DrM Filter Technology Pvt. Ltd.
Plot 46 – 1 & 2
Hansot Road Village
Pungam, Ankleshwar
Bharuch, Gujarat,
393020, India
Tel. +91 2646 652775/6

USA

DrM, Inc.
2125 Center Ave.
Suite 507
Fort Lee NJ 07024, USA
Tel. +1 201 302 0667
Fax +1 201 302 6062

Malaysia

DrM, Dr. Mueller AG
SEA Regional Office
No. 13 Jalan SE 2B
Sunway Eastwood
Taman Equine
Seri Kembangan
43300 Selangor, Malaysia
Tel. +60 3 8940 4917
Mob. +60 17 394 056